

Braidheart cowl or scarf



This is Knit with...

Yarn Debbie Bliss Luxury Tweed Chunky. Cowl: 1x 100g skein. Scarf: 2 x 100g skein.

Needles & Notions 6mm (or size needed to obtain gauge) straight or circular needles (cowl is knit back and forth).

Cable needle.

Darning needle.

If making cowl, you will need the above, plus:

1 sewing needle

Sewing thread in a matching colour

2 buttons

Gauge 12sts = 10cm in stocking st, although gauge is not essential to this project.

This is a deceptively easy pattern, with just eight lines of a repeat. The only effort required of you is at the third and seventh line, where the cabling magic happens. For every other row, follow the instructions below, or for a quicker way to remember what you are doing – knit every knit and purl every purl. It's really just a ribbed rectangle, and just as easy to knit! Knit in bulky yarn, with no seaming, and just two ends to weave in, this makes a perfect last minute gift.

Use one skein to make a buttoned collar-style cowl. Use two skeins and skip the buttonhole directions for a cosy, long, warm winter scarf. This pattern is unisex, and works particularly well in a dark colour for men.

PATTERN NOTES:

All cabled stitches are knit stitches, ie C4B = slip two stitches to cable needle, hold the cable needle to the back of the work, knit two, then knit the two from the cable needle (C4F is the same, but holding the cable needle to the front of the work). If you run out of yarn, don't panic. If you are making the scarf, it won't be noticeable if you need to cast off somewhere mid-repeat. If you are making the cowl, place the buttonholes in the reverse stocking stitch section about three lines before you think you'll run out. There is a chart attached to the end of the pattern, if you prefer to read the instructions that way.

INSTRUCTIONS:

Cast on 29 sts.

1. p1, k1, p2, k4, p2, k9, p2, k4, p2, k1, p1
2. k1, p1, k2, p4, k2, p9, k2, p4, k2, p1, k1
3. p1, k1, p2, c4B, p2, c6B, k3, p2, c4F, p2, k1, p1
4. k1, p1, k2, p4, k2, p9, k2, p4, k2, p1, k1
5. p1, k1, p2, k4, p2, k9, p2, k4, p2, k1, p1
6. k1, p1, k2, p4, k2, p9, k2, p4, k2, p1, k1
7. p1, k1, p2, c4B, p2, k3, c6F, p2, c4F, p2, k1, p1
8. k1, p1, k2, p4, k2, p9, k2, p4, k2, p1, k1

Cowl:

Repeat these eight lines 13 times more.

Repeat one more time (so cowl contains 15 repeats in total) but replacing row 5 with this row:

p1, k1, p2, k4, yo, p2tog, k9, p2tog, yo, k4, p2, k1, p1 (Remembering that a yo before a purl stitch will mean that the thread hangs at the back of the needle, as if to knit, and that a yo before a knit stitch will mean that the thread hangs at the front of the needle, as if to purl – position your yo in terms of the stitch that comes after it.)

Cast off. Weave in ends. Block. Sew two buttons along the side of the opposite side of the cowl.

Scarf:

Repeat these eight lines 30 times more, or until your yarn runs out. Cast off. Weave in ends. Block. Snuggle.

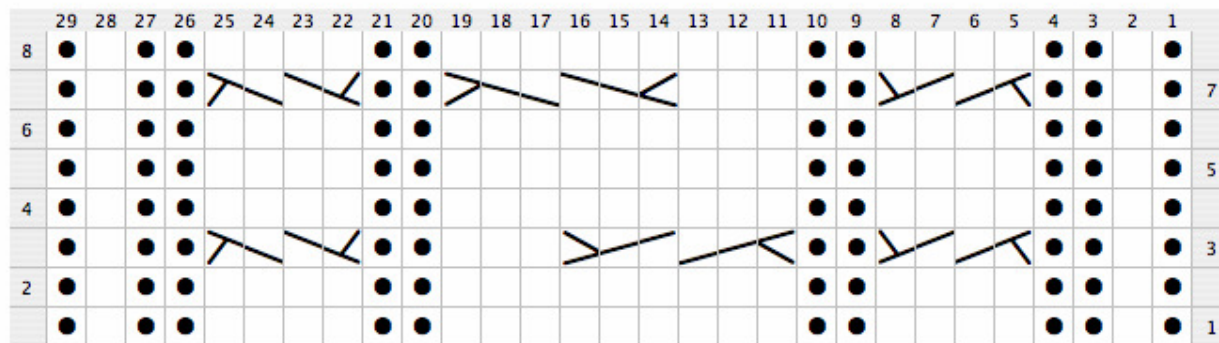
NOTES:

'Four Stitch Cable' and 'Reverse Plait or Branch Cable' appear on p.241 and p.244 of Barbara Walker's *A Treasury of Knitting Patterns* Vol. 1. Chart contributed by Bairbre Guilfoyle.

Any problems with the pattern? Don't hesitate to email me at enquiries@thisisknit.ie.

© ROSE ANNE (2010)

E | info@thisisknit.ie W | www.thisisknit.ie



Legend:

●
 RS: purl stitch
 WS: knit stitch

□
 knit
 RS: knit stitch
 WS: purl stitch



c2 over 2 right
 RS: sl2 to CN, hold in back. k2, k2 from CN



c3 over 3 right
 RS: sl3 to CN, hold in back. k3, then k3 from CN



c2 over 2 left
 RS: sl 2 to CN, hold in front. k2, k2 from CN



c3 over 3 left
 RS: sl3 to CN, hold in front. k3, k3 from CN

Abbreviations

<i>RS</i>	Right Side
<i>WS</i>	Wrong Side
<i>CN</i>	Cable Needle
<i>k</i>	knit
<i>p</i>	purl
<i>sl</i>	slip
<i>p2tog</i>	purl two together
<i>C4B</i>	slip two stitches to cable needle, hold the cable needle to the BACK of the work, knit two, then knit the two from the cable needle
<i>C4F</i>	slip two stitches to cable needle, hold the cable needle to the FRONT of the work, knit two, then knit the two from the cable needle

Created in KnitVisualizer (www.knitfoundry.com)